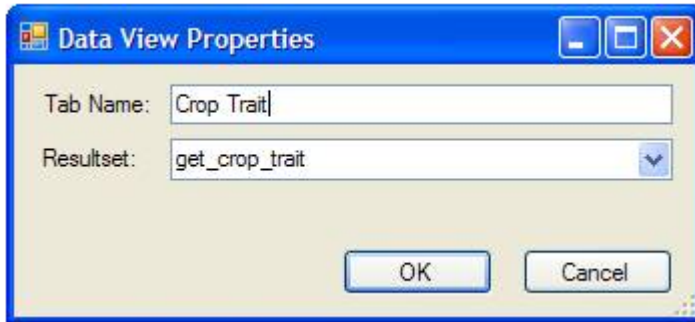


Add a new descriptor

The good news is that creating a new descriptor is relatively easy to do. Here are some basic instructions for doing this.

1) First add a new dataview tab for editing the Crop Trait table (as shown in this image):



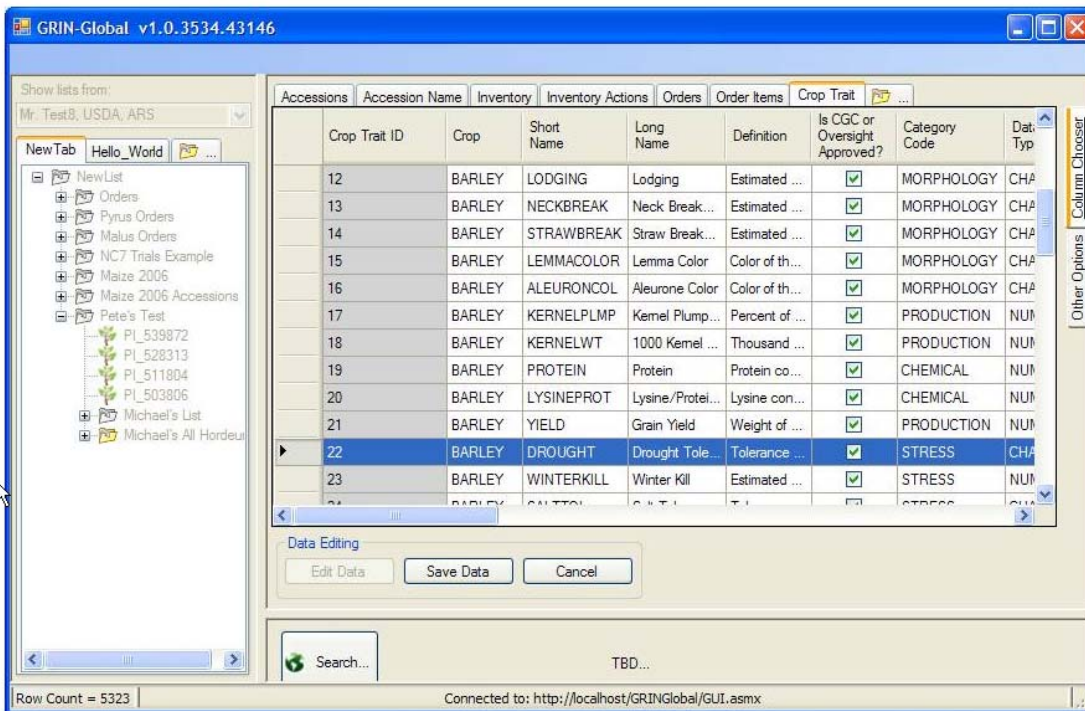
2)

3) Next filter the CROP to BARLEY as we discussed before (you should only see about 64 rows)

4) Click the 'Edit Data' button

5) Choose a row that is similar to the one you would like to create (typically one that has the same Category Code - like STRESS). Remember to select the entire row by clicking the row header button where the triangle-pointer glyph shows up (it is just to the left of the Crop Train ID column)

6)



7) Press CTRL + N which will duplicate the row you are on and create a new row

8) Change the values in the cells to suit your purposes for the new descriptor

9) When you are done editing click the 'Save Data' button

10) Remember - you will need to refresh your Crop Trait Lookup Table if you wish to pick it from the 'Lookup Picker' dialog box. To do this click on the 'Refresh Data' button. Let me know if you have any problems with these instructions.